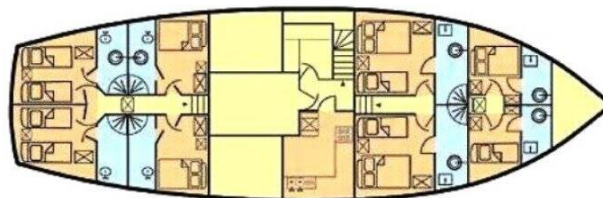


# QUEEN OF ADRIATIC

Queen of Adriatic (2008)

The Gulet Queen of Adriatic Queen of Adriatic homeport is Kaštel Gomilica, Kaštilac, Croatia. Built in 2008, and accommodates up to 12 + 2 persons in 6 cabins, and has 6 heads.



## YACHT SPECIFICATIONS

Charter base

**Kaštel Gomilica, Kaštilac, Croatia**

Yacht ID

**12290**

Brands

**Yener Yachts**

Name

**Queen of Adriatic**

Production year

**2008**

Length

**89 ft**

Cabins

**6**

Berths

**12 + 2**

Head/Shower

**6**

Engine

**2 x 450 HP**

Fuel tank

**9000 l**

SECRET  ADRIATIC

WEBSITE

[www.secret-adriatic.com](http://www.secret-adriatic.com)

E-MAIL

[info@secret-adriatic.com](mailto:info@secret-adriatic.com)

PHONE

+385 (0)91 2106 996

SECRET ADRIATIC D.O.O.

Put Mavarčice 1/a, Okrug Gornji, Croatia

## YACHT EQUIPMENT

Comfort	<b>Bed linen, Blankets, Pillows, Sheets, Towels</b>
Deck	<b>Bar</b>
Entertainment	<b>Banana boat, Donut, Fishing equipment, Kayak, Radio CD player, Snorkeling equipment, Stand up paddle (SUP), TV + DVD, Water skis, Wi-Fi Internet</b>
Yacht electrics	<b>Air Conditioning, Battery charger , Generator</b>

## SERVICES

EXTRA SERVICES	OBLIGATORY	PAYMENT TYPE	PRICE
<b>AC generator running over 12h/day</b> <i>(Payable in the base)</i> <b>Price per week / Season: 2025.</b> <i>running over 12h/day</i>	No	per hour	<b>20,00 €</b>
<b>All inclusive domestic non alcoholic package</b> <i>(Payable in the base)</i> <b>Price per week / Season: 2025.</b> <i>Water, tea, coffee, juices</i>	No	per week/ person	<b>145,00 €</b>
<b>All inclusive domestic package</b> <i>(Payable in the base)</i> <b>Price per week / Season: 2025.</b> <i>Includes Croatian-produced wine, beer, spirits, soft drinks, and hot beverages. *Special ordered wines or premium wines, foreign alcoholic drinks like vodka, whiskey, gin, champagnes etc., are extra cost if consumed</i>	No	per week/ person	<b>290,00 €</b>
<b>All inclusive package</b> <i>(Payable in the base)</i> <b>Price per week / Season: 2025.</b> <i>soft drinks and hot beverages, beer, Croatian produced quality wine from boat bar list, also foreign spirits: Bombay Sapphire and Tanqueray gin, Absolut and Finlandia vodka, Johnny Walker Red Label, Jameson, Sambuca, J. Cuervo Silver tequila, Amaretto, Vermouth, Jägermeister, Malibu, Aperol, Prosecco, Baileys. *All drinks not listed are not included and should be supplied and charged at special arrangement.</i>	No	per week/ person	<b>470,00 €</b>
<b>Corkage fee</b> <i>(Payable in the base)</i> <b>Price per week / Season: 2025.</b> <i>If guests supply drinks and beverages, a Non-alcoholic drink supplement is obligatory and considered a corkage fee</i>	No	per week/ person	<b>145,00 €</b>
<b>Extra meal</b> <i>(Payable in the base)</i> <b>Price per week / Season: 2025.</b>	No	per person	<b>45,00 €</b>
<b>Extra navigation</b> <i>(Payable in the base)</i> <b>Price per week / Season: 2025.</b> <i>above 5h daily</i>	No	per hour	<b>70,00 €</b>
<b>Fuel consumption</b> <i>(Payable in the base)</i> <b>Price per week / Season: 2025.</b> <i>Fuel for water sports that use tender (water ski, donut, wakeboard, etc..)</i>	No	per hour	<b>80,00 €</b>

<b>Full board</b> <i>(Payable in the base)</i>	No	per week/ person	<b>350,00 €</b>
<b>Price per week / Season: 2025.</b> <i>(for children) excluding drinks, FOOD DISCOUNT FOR CHILDREN: Food for children under the age of 2: Free of charge Food for children under the age of 11: -50% Two weeks booked: -5%</i>			
<b>Full board</b> <i>(Payable in the base)</i>	No	per week/ person	<b>700,00 €</b>
<b>Price per week / Season: 2025.</b> <i>excluding drinks</i>			
<b>Half board</b> <i>(Payable in the base)</i>	Yes	per week/ person	<b>500,00 €</b>
<b>Price per week / Season: 2025.</b> <i>Excluding drinks Food for children under the age of 2: Free of charge Food for children under the age of 11: - 50%</i>			
<b>One way</b> <i>(Payable in the base)</i>	No	one-way	<b>1.000,00 €</b>
<b>Price per week / Season: 2025.</b> <i>to Dubrovnik (if empty leg caused)</i>			
<b>Online doctor</b> <i>(Payable in the base)</i>	No	per week	<b>30,00 €</b>
<b>Price per week / Season: 2025.</b> <i>24/7</i>			
<b>Parking</b> <i>(Payable in the base)</i>	No	per week	<b>80,00 €</b>
<b>Price per week / Season: 2025.</b> <i>Please, contact marina for more details</i>			
<b>Port fee</b> <i>(Payable in the base)</i>	No	per booking	<b>1.500,00 €</b>
<b>Price per week / Season: 2025.</b> <i>Port and marina fees, anchorage charges, and entrance fees for National Parks and protected areas are variable costs and must be paid in cash at the end of the cruise, based on current rates at each specific location. The total weekly cost depends on the selected itinerary, with estimated expenses ranging from €1,000 to €2,000 per week.</i>			
<b>Tourist tax</b> <i>(Payable in the base)</i>	Yes	per guest/night	<b>2,00 €</b>
<b>Price per week / Season: 2025.</b>			

## OPTIONAL EXTRAS

EXTRAS	OBLIGATORY	PAYMENT TYPE	PRICE
<b>Jet Ski</b> <i>(Payable in the base)</i>	No	per week	<b>1.000,00 €</b>
<b>Price per week / Season: 2025.</b> + fuel - Payable in the base			

## PRICE AND AVAILABILITY

23.08. - 30.08.2025 20.491 € 23.900€	30.08. - 06.09.2025 20.491 € 23.900€	06.09. - 13.09.2025 20.491 € 23.900€	13.09. - 20.09.2025 15.347 € 17.900€
20.09. - 27.09.2025 15.347 € 17.900€	27.09. - 04.10.2025 15.347 € 17.900€	04.10. - 11.10.2025 16.110 € 17.900€	11.10. - 18.10.2025 16.110 € 17.900€
18.10. - 25.10.2025 16.110 € 17.900€	25.10. - 01.11.2025 16.110 € 17.900€	01.11. - 08.11.2025 17.900 €	08.11. - 15.11.2025 17.900 €
15.11. - 22.11.2025 17.900 €	22.11. - 29.11.2025 17.900 €	29.11. - 06.12.2025 17.900 €	06.12. - 13.12.2025 17.900 €
13.12. - 20.12.2025 17.900 €	20.12. - 27.12.2025 17.900 €		